

C707

Soft Serve Freezer - Single Flavour, Gravity



Taylor C707 with optional C201 cart

ITEM No. _____

Model options:

C707/1A Soft Serve Freezer (single phase)

C707/3A Soft Serve Freezer (three phase)

(AIR cooled as standard, water cooled units are available on request)

Standard equipment:

- Top air discharge chute
- 1x Starter kit sanitiser sachets
- 1x White cleaning bucket
- 1x Tube Taylor food safe lubricant
- 1x Taylor cleaning brushes
- 1x Replacement tune up kit
- 12 Months parts & labour warranty

Optional extras:

- C201 cart with castors (68.0Kg)
- Hopper locks
- Hopper agitator (factory order)
- Ice cream cone decal kit
- Built-in syrup rail (requires special cart & factory order)
- Extended service contract (call for details)

Features:

Offer all the popular soft serve variations from 'Whippy style' low or non-fat ice creams to custards, yogurt, sorbet and vegan desserts.

- ♦ **Freezing Cylinder** - One, 3.2 litre
- ♦ **Hourly Production**** - 34.11 litres (approximately)
- ♦ **Mix Hopper** - One, 18.9 litre. Separate hopper refrigeration (SHR) maintains mix below 5°C during Auto and Standby modes.
- ♦ **Indicator Lights** - Mix Low light alerts operator to add mix. When the Mix Out light flashes, the unit shuts down automatically to prevent damage.
- ♦ **Electronic Controls** - Softech™ is our exclusive microprocessor based master control that regulates refrigeration by measuring product viscosity to maintain consistent quality.
- ♦ **Standby** - During long no-use periods, the standby feature maintains safe product temperatures in the mix hopper and freezing cylinder.
- ♦ **Digital Temperature Indicator** - Hopper temperature is displayed to assure safe product temperatures.
- ♦ **Door Interlock System** - Protects the operator from injury as the beater will not operate without the dispensing door in place.
- ♦ **Flavor Burst™ FB80 Compatible** (call for details)



Taylor UK (a division of HTG Trading Ltd)
106 Claydon Business Park, Gt. Blakenham,
Ipswich, Suffolk, IP6 0NL, United Kingdom
0800 838 896 - sales@taylor-company.co.uk
www.taylor-company.co.uk

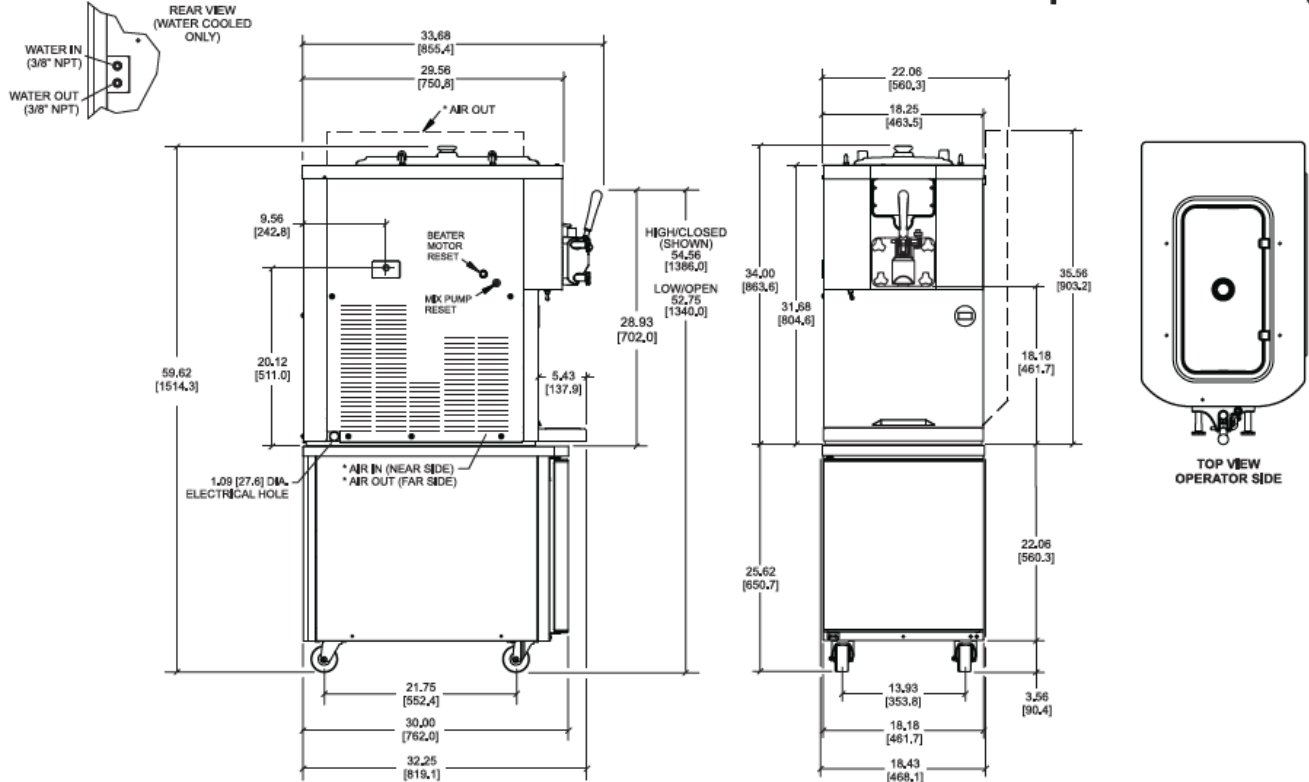
Due to continual research and development, these specifications are subject to change without notification - May2024

C707

Soft Serve Freezer - Single Flavour, Gravity



ITEM No. _____

Section view: (Dimensions shown in brackets in mm)



FIGURES IN BRACKETS INDICATE MILLIMETERS / DECIMAL AND FRACTIONAL DIMENSIONS EQUAL TO (PLUS OR MINUS 1/16 INCH [1.5mm]). * (AIR COOLED ONLY)

Shown with optional C201 cart and top air discharge chute

TAYLOR C707	SINGLE PHASE	THREE PHASE
External dimensions (WxDxH) inc. Handle	561 x 856 x 903 mm	
External dimensions (WxDxH) on Cart	561 x 857 x 1554 mm	
Net weight / crated weight (freezer only)	176.9 Kg / 186.9 Kg	
Wall clearance* (sides/back)	150 mm / 0 mm	
Soft serve freezers are NOT designed for built-in installation		
Refrigeration system - Main	9,500 BTU/hr - R449A	
Refrigeration system - Hopper	400 BTU/hr - R134A	
Beater motor (No./Power)	1 - 1.5 HP	
Noise Level	≤ 78 dB (A)	
Cooling	Air (water cooled available on request)	
Approximate hourly production**	34.11 ltr	
Voltage	230v / 50Hz / 1Ph	400v / 50Hz / 3Ph
Minimum circuit ampacity	21 amps	8 amps per phase
Circuit breaker / Type	25 amp / C-Type	16 amp / C-Type
Isolator socket	32 amp (1P+N+E)  BLUE	32 amp (3P+N+E)  RED



Shown with top air discharge chute.

*Minimum air clearances **MUST** be met to assure adequate airflow for optimum performance of air cooled machines. Place the back of the unit against a wall to prevent recirculation of warm air. Failure to allow adequate airflow will invalidate any warranty claim.

**Hourly production figures are approximate and based on optimum operating conditions. Product type, ambient air temperature and air flow will effect the production capacity.

•A dedicated power supply which can be completely disconnected is required for safe operation. Taylor equipment is not designed to be 'hard wired' and should never be operated on any form of extension lead. **Please consult a qualified electrician for correct installation advice.**

Data for air cooled units.



Taylor UK (a division of HTG Trading Ltd)
106 Claydon Business Park, Gt. Blakenham,
Ipswich, Suffolk, IP6 0NL, United Kingdom
0800 838 896 - sales@taylor-company.co.uk
www.taylor-company.co.uk

Due to continual research and development, these specifications are subject to change without notification - May 2024