

# 3DSHOW

Gelato display with 3D visibility



Model RV 220 H135



Model RV 220 H117



ITEM No. \_\_\_\_\_

Model options:

- 3DSHOW RV 120
- 3DSHOW RV 155
- 3DSHOW RV 170
- 3DSHOW RV 190
- 3DSHOW RV 220

ALL models listed above are available either H117 or H135 high

Standard equipment:

- Cool white LED lighting 5700 K°
- Work top - Glacier White Corian™
- Front panel - White (RAL9003)
- Lower front grill - White (RAL9003)
- Side panels - White (RAL9003)
- Plexiglass sliding doors
- Swivel castors with brake & adjustable feet

Optional extras:

- 5 Lt standard Napoli pan (Polycarbonate)
- 5 Lt wide Napoli pan (Polycarbonate) (360x250x80h mm)
- Cone holder with/without toppings container
- Scoop wash with shower or tap
- Ice lolly container (250x360x43h mm)
- Tray for individual portions (250x360 mm)
- Dual temperature function (call for details)
- Remote refrigeration installation (call for details)
- Custom RAL panel colours (call for details)
- Front, side & grill panel colours - Glacier White Corian™ Nero Fenix™

Features:

- ◆ 3DShow is a gelato cabinet providing a 3D visibility thanks to its transparent structure and polycarbonate containers. The front lighting further enhances the ice-cream display.
- ◆ Ventilated refrigeration with horizontal finned evaporator and double airflow for a perfect uniformity of temperature. Automatic reverse defrosting cycle.
- ◆ One piece body with ecological polyurethane insulation (HCFC & HFC free), foamed with CO2 - 60 mm thick.
- ◆ Display base and service top is finished in bright stainless steel, rear panel finished in painted sheet with epoxy powder coating. Side panels in bright stainless steel.
- ◆ Tempered glass with heating and tilt-down front glass opening, LED lighting and polycarbonate sliding doors on the operator side.
- ◆ Control board on the operator side, electronic board and digital thermometer inside the tank, temperature control set at -20/+2 °C.



**ENERGY SAVING**  
LED lights + EC fan motor



**REFRIGERATION**  
Ventilated double flow



**DEFROST**  
Reverse cycle



**REFRIGERANT**  
R452A



**INSTALLATION**  
Plug-In / Remote (optional)



**TEMPERATURE**  
-20 / +2 °C



**CLIMATE CLASS**  
4



**ENERGY RATING**  
E



Sistema di Qualità  
**ISO 9001**  
Cert. CISQ/CSQ 9130.TAIF



Sistema di Qualità  
**ISO 14001**  
Cert. CIS ECO ISO 9191.ISA3



**Taylor UK** (a division of HTG Trading Ltd)  
106 Claydon Business Park, Gt. Blakenham,  
Ipswich, Suffolk, IP6 0NL, United Kingdom  
**0800 838 896 - sales@taylor-company.co.uk**  
**www.taylor-company.co.uk**

Due to continual research and development, these specifications are subject to change without notification.

March 2021

3DSHOW - Gelato display with 3D visibility - 12/16/18/20/24 flavour

# 3DSHOW

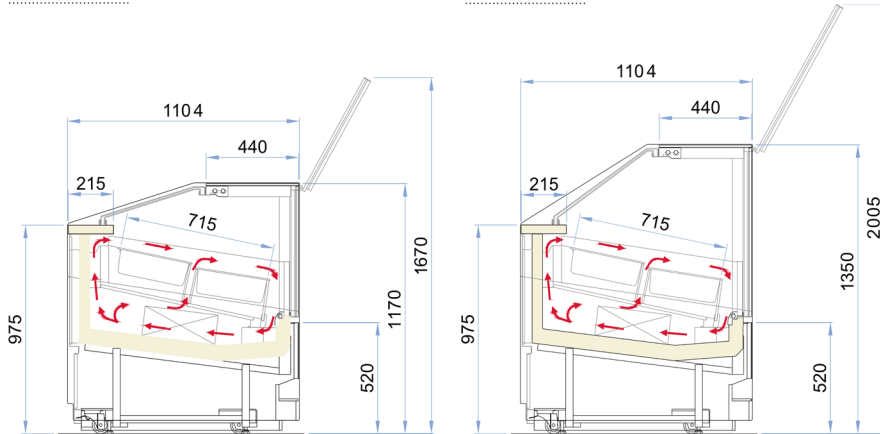


## Gelato display with 3D visibility

Section view: (all dimensions in mm)

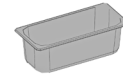
H117

H135



ITEM No. \_\_\_\_\_

Napoli configuration:

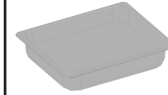


5 Lt (STD Polycarbonate)  
360 x 165 x 120(h) mm

Display

Model 120  
Model 155  
Model 170  
Model 190  
Model 220

12  
16  
18  
20  
24



5/10 Lt (WIDE Polycarbonate)  
360 x 250 x 80/120(h) mm

Display

Model 120  
Model 155  
Model 170  
Model 190  
Model 220

8  
10  
12  
12  
16

3DSHOW		Model type	Display area m <sup>2</sup>	Temp class	Reccom. temp °C	Energy class	Energy Efficiency Index	Annual Energy kWh/A
H117	120	IFG1	1.09	G2	-15 °C	E (R452A)	58.00	12,323
	155	IFG1	1.41	G2	-15 °C	E (R452A)	59.76	14,804
	170	IFG1	1.57	G2	-15 °C	E (R452A)	61.92	16,431
	190	IFG1	1.73	G2	-15 °C	E (R452A)	63.87	18,074
	220	IFG1	2.05	G2	-15 °C	E (R452A)	61.96	19,717
H135	120	IFG1	1.09	G2	-15 °C	E (R452A)	60.00	12,823
	155	IFG1	1.41	G2	-15 °C	E (R452A)	61.16	15,153
	170	IFG1	1.57	G2	-15 °C	E (R452A)	63.65	16,891
	190	IFG1	1.73	G2	-15 °C	E (R452A)	65.77	18,613
	220	IFG1	2.05	G2	-15 °C	E (R452A)	63.82	20,309

Configuration: air cooled plug-in unit (R452A) plexiglass sliding door closure, LED lighting

3DSHOW*	RV 120	RV 155	RV 170	RV 190	RV 220
External dimensions (LxDxH) <b>H117</b>	1172x 1104 x 1170 mm	1502 x 1104 x 1170 mm	1667 x 1104 x 1170 mm	1832 x 1104 x 1170 mm	2162 x 1104 x 1170 mm
External dimensions (LxDxH) <b>H135</b>	1172 x 1104 x 1350 mm	1502 x 1104 x 1350 mm	1667 x 1104 x 1350 mm	1832 x 1104 x 1350 mm	2162 x 1104 x 1350 mm
Net weight <b>H117</b>	330 kg	390 kg	425 kg	460 kg	525 kg
Net weight <b>H135</b>	340 kg	400 kg	435 kg	470 kg	535 kg
Refrigeration	Ventilated				
Refrigerant	R452A				
Climate class	4				
Operating conditions	30 °C / 55 %RH				
Operating temperature range	-20 / +2 °C				
Product storage temperature	-16 / -14 °C				
Compressor (no. - type)	1 - Semi-hermetic				
Defrost process	Reverse cycle				
Power supply voltage	400v / 50hz / 3ph				
Electrical input (nominal)	1740w / 3.1 A	2470 w / 6.3 A	2780 w / 6.8 A	4000 w / 11.5 A	4770 w / 13.5 A
Electrical input (defrost)	3260 w / 7.9 A	3870 w / 8.5 A	4250 w / 9.6 A	5000 w / 12.5 A	5600 w / 3.9 A



ISO 9001  
Cert. CISQ/CSQ 9130.TAIF



ISO 14001  
Cert. CIS ECO ISO 9191.ISA3



Taylor UK (a division of HTG Trading Ltd)

106 Claydon Business Park, Gt. Blakenham,  
Ipswich, Suffolk, IP6 0NL, United Kingdom

0800 838 896 - sales@taylor-company.co.uk

www.taylor-company.co.uk

Due to continual research and development, these specifications are subject to change without notification.

\*Data for air cooled units. Water cooled and remote installations are available on request.

3DSHOW - Gelato display with 3D visibility - 12/16/18/20/24 flavour