

MILLENNIUM ST/LX



Professional ventilated gelato display



Model ST 220 H135



Model LX 220 H135

ITEM No. _____

Model options:

(ST - STRAIGHT GLASS)

- MILLENNIUM ST 120
- MILLENNIUM ST 155
- MILLENNIUM ST 170
- MILLENNIUM ST 190
- MILLENNIUM ST 220

ST models listed above are available either H117 or H135 high

(LX - CURVED GLASS)

- MILLENNIUM LX 120
- MILLENNIUM LX 155
- MILLENNIUM LX 170
- MILLENNIUM LX 190
- MILLENNIUM LX 220

Standard equipment:

- Cool white LED lighting 5700 K°
- Work top - Stainless steel
- Front panel - White (RAL9003)
- Lower front grill - Stainless steel
- Side panels - White (RAL9003)
- Plexiglass sliding doors
- Swivel castors with brake & adjustable feet

Optional extras:

- 5 Lt standard Napoli pan (S/S)
- 5 Lt wide Napoli pan (S/S) (360x250x80h mm)
- Cone holder
- Scoop wash with tap
- Self rolling night curtain
- Dual temperature function (call for details)
- 1x Ambient shelf above main display area
- Remote refrigeration installation (call for details)
- Custom RAL panel colours (call for details)

Features:

- ◆ Gelato cabinets with ventilated refrigeration, finned evaporator and automatic reverse defrosting cycle.
- ◆ One piece body with ecological polyurethane insulation (HCFC & HFC free), foamed with CO2 60 mm thick.
- ◆ Display base and service top in bright stainless steel, rear panel in plasticised sheet, external base in painted sheet. Upper structure with lateral profiles in carbon steel painted with black epoxy powder coating.
- ◆ External stratified side glass panel structure with anti-condensation heating system. Millennium is available with either straight (ST) or curved (LX) glass.

MILLENNIUM		Model type	Display area m ²	Temp class	Reccom. temp °C	Energy class	Energy Efficiency Index	Annual Energy kWh/A
Height	Length							
H135 LX	120	IFG1	0.71	G2	-15 °C	D (R290)	43.77	7,456
	155	IFG1	0.95	G2	-15 °C	E (R290)	58.48	11,504
	170	IFG1	1.07	G2	-15 °C	D (R290)	49.76	10,445
	190	IFG1	1.19	G2	-15 °C	D (R290)	49.65	11,076
	220	IFG1	1.43	G2	-15 °C	D (R290)	49.75	12,410
H117 ST	120	IFG1	0.71	G2	-15 °C	D (R290)	40.60	6,911
	155	IFG1	0.95	G2	-15 °C	E (R290)	54.80	10,775
	170	IFG1	1.07	G2	-15 °C	D (R290)	47.10	9,882
	190	IFG1	1.19	G2	-15 °C	D (R290)	46.30	10,320
	220	IFG1	1.43	G2	-15 °C	D (R290)	47.40	11,826
H135 ST	120	IFG1	0.71	G2	-15 °C	D (R290)	42.50	7,239
	155	IFG1	0.95	G2	-15 °C	E (R290)	56.78	11,169
	170	IFG1	1.07	G2	-15 °C	D (R290)	49.27	10,342
	190	IFG1	1.19	G2	-15 °C	D (R290)	48.68	10,859
	220	IFG1	1.43	G2	-15 °C	D (R290)	49.75	12,410

Configuration: air cooled plug-in unit (R290) self rolling curtain closure, LED lighting



ENERGY SAVING
LED lights + EC fan motor



REFRIGERATION
Ventilated



DEFROST
Reverse cycle



REFRIGERANT
R290



INSTALLATION
Plug-In / Remote (optional)



TEMPERATURE
-20 / +2 °C



CLIMATE CLASS
7



ENERGY RATING
D + E



Taylor UK (a division of HTG Trading Ltd)
106 Claydon Business Park, Gt. Blakenham,
Ipswich, Suffolk, IP6 0NL, United Kingdom
0800 838 896 - sales@taylor-company.co.uk
www.taylor-company.co.uk

Due to continual research and development, these specifications are subject to change without notification.

Sept 2023

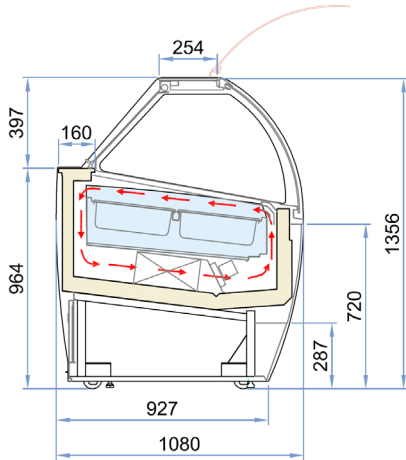
MILLENNIUM ST/LX



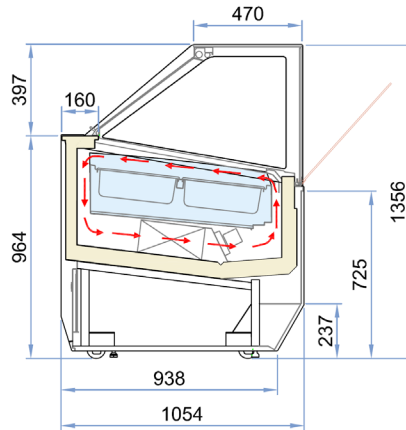
Professional ventilated gelato display

Section view: (all dimensions in mm)

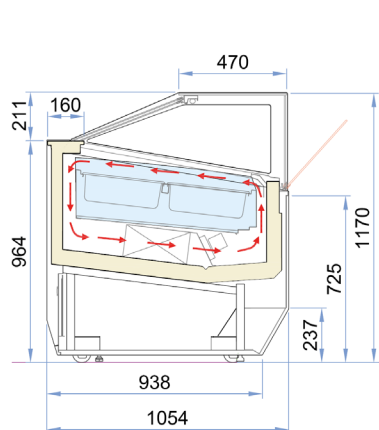
LX H135



ST H135

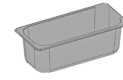


ST H117



ITEM No. _____

Napoli configuration:

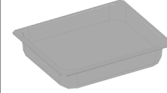


5 Lt (STD)
360 x 165 x 120(h) mm

Display

Model 120
Model 155
Model 170
Model 190
Model 220

12
16
18
20
24



5/10 Lt (WIDE)
360 x 250 x 80/120(h) mm

Display

Model 120
Model 155
Model 170
Model 190
Model 220

8
10
12
12
16

MILLENNIUM ST/LX*	120	155	170	190	220
External dimensions (LxDxH) LX H135	1166 x 1080 x 1356 mm	1496 x 1080 x 1356 mm	1661 x 1080 x 1356 mm	1826 x 1080 x 1356 mm	2156 x 1080 x 1356 mm
External dimensions (LxDxH) ST H117	1166 x 1054 x 1170 mm	1496 x 1054 x 1170 mm	1661 x 1054 x 1170 mm	1826 x 1054 x 1170 mm	2156 x 1054 x 1170 mm
External dimensions (LxDxH) ST H135	1166 x 1054 x 1356 mm	1496 x 1054 x 1356 mm	1661 x 1054 x 1356 mm	1826 x 1054 x 1356 mm	2156 x 1054 x 1356 mm
Net weight - H117 / H135	195 kg / 200 kg	224 kg / 230 kg	252 kg / 260 kg	300 kg / 310 kg	348 kg / 360 kg
Refrigeration	Ventilated				
Refrigerant	R290				
Climate class	7				
Operating conditions	35 °C / 75 %RH				
Operating temperature range	-20 / +2 °C				
Product storage temperature	G2 -10 / -16 °C				
Compressor (no. - type)	1 - Hermetic	2 - Hermetic			
Defrost process	Reverse cycle				
Power supply voltage	230v / 50hz / 1ph				
Electrical input (nominal)	1050 w / 5.1 A	1690 w / 8.3 A	1800 w / 8.9 A	1890 w / 9.3 A	1990 w / 9.8 A
Electrical input (defrost)	1400 w / 6.6 A	2340 w / 12.4 A	2450 w / 13.3 A	2560 w / 13.6 A	2640 w / 14.0 A



ISO 9001
Cert. CISQ/CSQ 9130.TAIF



ISO 14001
Cert. CIS ECO ISO 9191.ISA3



Taylor UK (a division of HTG Trading Ltd)
106 Claydon Business Park, Gt. Blakenham,
Ipswich, Suffolk, IP6 ONL, United Kingdom
0800 838 896 - sales@taylor-company.co.uk
www.taylor-company.co.uk

Due to continual research and development, these specifications are subject to change without notification.

*Data for air cooled units. Water cooled and remote installations are available on request.